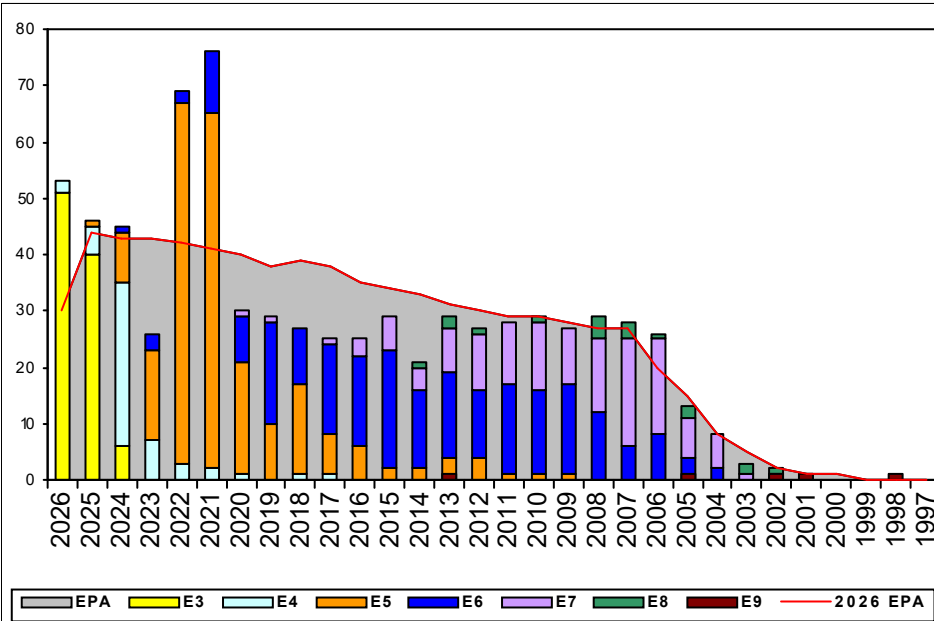


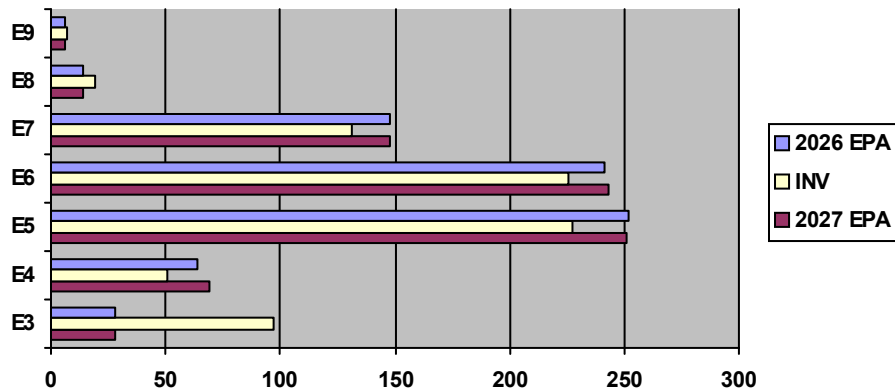
Hospital Corpsman, TAR - L500



Sea Shore Rotation			FS MANNING		
TOUR	SEA	SHORE	PG	SEA	SHORE
E1-3	48	42	E1-3	300.00%	0.00%
E4	48	42	E4	42.86%	84.62%
E5	48	42	E5	100.00%	85.92%
E6	48	42	E6	114.29%	91.24%
E7	48	36	E7	50.00%	87.69%
E8	48	36	E8	0.00%	211.11%
E9	42	36	E9	0.00%	175.00%

	Pay Grade	E1-E3	E4	E5	E6	E7	E8	E9
TIS to PG Years	ALL Navy	TIR	1.7	3.4	8.4	14.1	18.2	21.8
	HMTAR	TIR	1.9	2.9	8.8	12.9	18.0	22.7
TIG to PG Years	ALL Navy	TIR	1.2	1.8	4.9	6.3	5.6	4.2
	HMTAR	TIR	1.4	1.4	5.0	5.8	5.8	5.3

EPA by Paygrade vs Inventory



	E1-3	E4	E5	E6	E7	E8	E9	TOTAL
% INV to FY26 EPA	346%	80%	90%	94%	89%	136%	117%	101%
EPA (FY26)	28	64	252	241	148	14	6	753
INVENTORY	97	51	227	226	131	19	7	758
EPA (FY27)	28	69	251	243	148	14	6	759
% INV to FY27 EPA	346%	74%	90%	93%	89%	136%	117%	100%

Zone Info	ZONE A	ZONE B	ZONE C	ZONE D	ZONE E	ALL ZONES
FY26 Manning:	133%	72%	83%	100%	85%	101%
FYTD RE Rate:	88.1%	91.3%	100.0%	97.4%	17.9%	81.0%
FY27 Manning:	133%	71%	82%	98%	83%	100%

NOTES

Reenlistment Opportunities: In-rate quotas approved based on performance, Year Group(YG), and NECs.

Conversion Opportunities: Rating conversion will be considered on a case-by-case basis. HM TAR is currently accepting conversions for in-rate E5s and below. E6s will be considered if approved to attend critically undermanned L10A NEC "C" school.

HYT Waivers: NAVADMIN 138/25 Effective 30 September 2025, the indefinite extension of the HYT Plus pilot will end for SELRES and TAR Sailors. TAR Sailors approaching the HYT LOS gate can submit standard waiver requests via MNCC.

For additional information contact HM TAR Enlisted Community Manager at jamarh.dixon.mil@us.navy.mil or HM_ECM@navy.mil.